

# NERO

90.1M (295.6FT)



## NERO

UNMISTAKABLE. UNFORGETTABLE. UNMATCHED.

STEP ABOARD NERO TO EXPERIENCE THE ULTIMATE IN PERFECTION. THE AWARD-WINNING DÉCOR AND OPULENT STYLING OF THE 1920S COMBINE TO OFFER THE PERFECT SETTING FOR GUESTS TO RELAX IN ABSOLUTE COMFORT AND INIMITABLE STYLE. HOSTED BY NERO'S CELEBRATED CREW, THE SERVICE IS FLAWLESS. EVERY WISH IS GRANTED AND GUESTS' RELAXATION IS THE DESTINATION OF EVERY ITINERARY.







Images left to right:

Arrival by NERO's 9.5m custom Corsair tender  
NERO's superb crew at the ready for guest arrival

## GOLDEN AGE ELEGANCE MEETS MODERN DAY LUXURY

DESIGNED AND BUILT TO EXACTING STANDARDS, NERO'S INSPIRED DESIGN TURNS HEADS WHEREVER SHE SAILS

Commissioned and built by Corsair Yachts in 2007, NERO evokes the spirit of JP Morgan's legendary yacht Corsair. The classic sheerline and thoughtful design touches make her instantly recognisable and absolutely unforgettable.

A modern classic, NERO encapsulates the glamour of gentleman's yachting in the 1920s and blends it

with 21st Century state-of-the-art technology to create a truly seductive package.

Immense deck areas feature a 5m pool and large jacuzzi, a huge toy inventory boosts adrenalin levels and a fully equipped spa with masseuse, beautician, gymnasium and fitness instructor means that her 12 guests can focus on wellness and relaxation.





SPACE TO BE





ABOARD NERO, EVERY DAY IS THE PERFECT DAY





Activities on board



Activities on board





Images left to right:

NERO's elegant profile  
Sun deck seating and snug  
Inside the snug on the sun deck

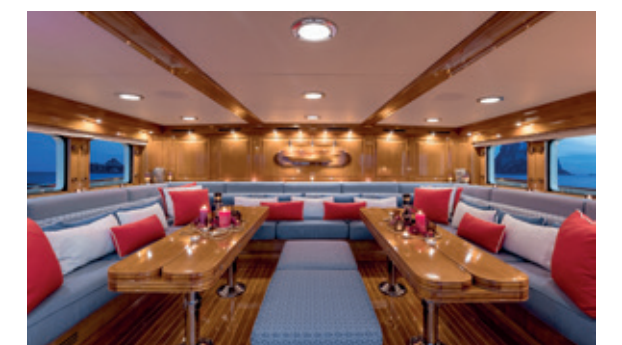
## EFFORTLESSLY CHIC

NERO EXEMPLIFIES ABSOLUTE ELEGANCE

The interior is all about tasteful opulence. Renowned Italian designer Laura Pomponi has created a joyful, light-filled interior that features cream and neutral tones with blue accents inspired by the hues of the sea, complemented by limed oak and marble. The overall effect is relaxed refinement.

Outside, the expansive deck spaces are a backdrop for al fresco enjoyment. The generous dining table on

the main deck aft was made for large gatherings, and the entertainment options on board are second to none. Your celebrations easily carry on into the night thanks to the Art Deco cocktail bar, a perfect place to enjoy the famous NERO cocktail selection.



DESIGNED FOR YOUR ULTIMATE COMFORT



Images clockwise:

- Sky lounge with bar on the upper deck
- Library on the main deck
- Main deck saloon



Images left:  
Observation lounge with cinema on the upper deck

Image right:  
Main deck saloon





Evening cocktails served in the sky lounge bar

Al fresco dining on the main deck aft, NERO style



Images clockwise:

- Main deck aft dining table
- Sun deck looking aft
- Sun deck looking forward



MICHELIN-STAR QUALITY

The dining experience on board NERO is a frequent talking point for guests.

An award-winning crew, the head chef and his dedicated team are always on hand to provide the best dining experience, whatever your requirements. Whether it's casual snacks by the pool, a themed

tasting menu or an all-out feast, your team is here to make it happen.

The chef's signature dishes draw on Asian flavours, sumptuous seafood and the essence of modern British cuisine to surprise and delight you and your guests.







Images left to right:

Elegant staircase on the main deck  
Exquisite marble-floored landing

## RETIRE IN LUXURY

A SUITE YOU'LL NEVER WANT TO LEAVE

NERO accommodates 12 guests in exceptional comfort. The duplex master suite is the jewel in the crown and one of the most impressive afloat with a private lounge, study, his and hers bathrooms with dressing room all on the main deck, and a private staircase leading to an observation lounge and private pool on the foredeck.

The VIP suite is also splendid, with a jacuzzi tub and private lounge. This is accompanied by two additional double cabins and two twin / double convertible cabins.



The master suite



Images clockwise:

One of the master en suite bathrooms

Master suite office

Dressing room in the master suite



The VIP suite on the lower deck



Guest cabins on the lower deck





## EXPLORE NEW HORIZONS

CREATE MOMENTS TO TREASURE FOREVER

Once you've spent some time relaxing and enjoying the panoramic views from the 42m sun deck with its large jacuzzi, sun pads, loungers, golf tee and indoor snug, it's time to try a yoga class or head to the spa. With a professional masseuse, beautician, gymnasium and fitness instructor on board 24/7, you'll leave your trip an even better version of yourself.

The main deck also offers an impressive welcome, thoughtfully laid out with a large dining table for special events and many covered lounging areas for relaxing in the shade.

For days when adventure calls, head to the swim platform for swimming and diving – or make your way to the water even faster via the inflatable waterslide from the top deck. Do you dare give it a try?

NERO has an exhilarating toy set-up, with high performance jetskis and waverunners, a wakeboard, tows and a selection of inflatables for the adventurous - there's even a flyboard for the serious thrill-seeker. And whenever you need to step ashore, the custom built 9.5m Corsair classic tender will get you there in enviable style.







NERO has a vast array of watersports: An 8m inflatable water slide, Flyboard, SeaBobs, Sea-Doo jetskis, Yamaha Superjet 700 stand-up jetski, paddleboards, wakeboards, waterskis, tows, canoes, snorkelling and fishing gear and all the inflatables. There are three tenders: a 9.5m custom Corsair tender, a 7.4m Zeta Elle tender and a 5.2m custom Nautica Rib.



NERO'S 9.5m custom Corsair tender

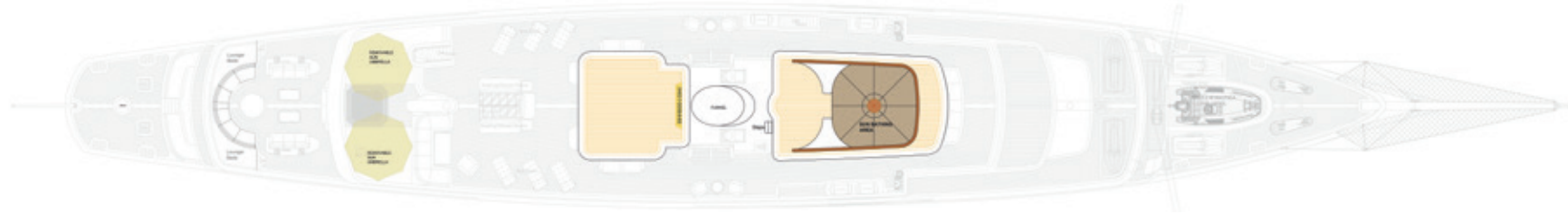






# DECK PLANS

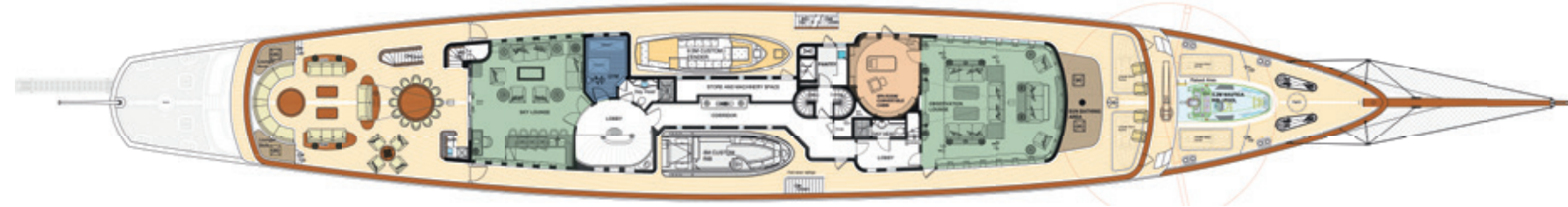
TOP DECK



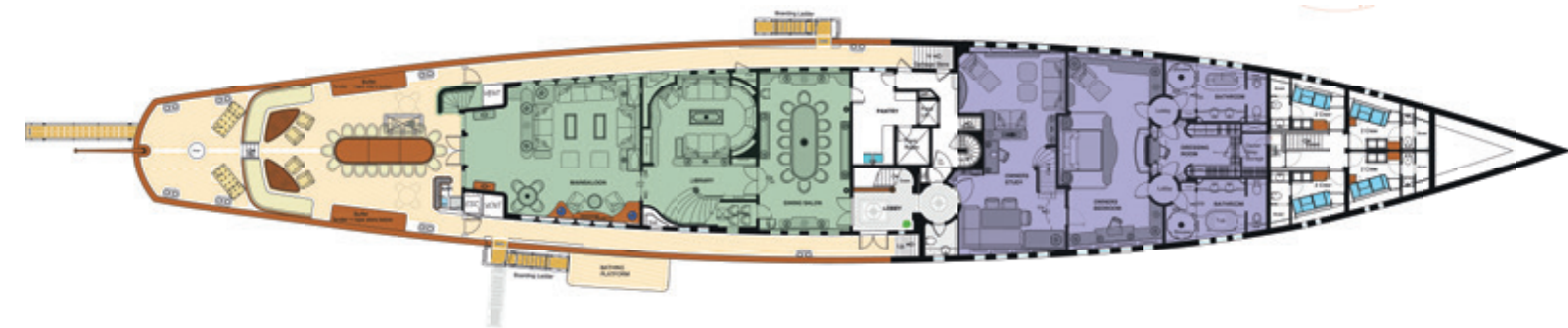
SUN DECK



UPPER DECK



MAIN DECK



LOWER DECK



# SPECIFICATIONS

## DIMENSIONS

**Length Overall:** 90.1m (295.6ft)

**Beam:** 12.0m (39.4ft)

**Draft:** 4.9m (16ft)

## BUILDER

2007, Corsair Yachts, China

## REFIT

2016, MB92, Barcelona

## EXTERIOR DESIGN

IMT Marine Consultants

## INTERIOR DESIGN

Laura Pomponi

## MAIN ENGINES

2 x 2,333hp Caterpillar

## STABILISERS

Zero speed stabilisers

## CRUISING SPEED

14 knots

## CREW

20

## GUEST ACCOMMODATION

12 guests in 6 cabins, plus 1 convertible room/spa

## TENDERS & TOYS

9.5m custom Corsair tender

7.4m Zeta Elle tender

5.2m custom Nautica Rib

4 x Sea-Doos

Yamaha Superjet 700 (stand-up jetski)

SeaBobs

Flyboard

8m inflatable waterslide

2 x stand-up paddleboards

2 x canoes

Fishing gear

Snorkelling gear

Waterskis, wakeboards and tows

## ENTERTAINMENT & COMMUNICATIONS

Interior cinema projector screen and exterior TV

State-of-the-art audio-visual systems, Apple TV

Satcom & cellular communications facilities, Fleet 77,

VSAT, Wi-Fi internet access

PHOTOGRAPHY: BLUEI PRODUCTIONS

BROCHURE DESIGN: W&R STUDIOS

BROCHURE COORDINATION: BURGESS

PRINTED IN ENGLAND

## KEY

Living Areas

Master Suite

Spa/Convertible Room

Pool and Jacuzzi

VIP Suite

Guest Cabins

Gym



NERO